



**GIFTED SIGHT BY BCT**  
**KILIFI COUNTY EYE CAMP**  
**26<sup>th</sup>-29<sup>th</sup> November 2018**

## Contents

|  |   |
|--|---|
| Contents .....                           | 2 |
| Acknowledgement .....                    | 3 |
| Introduction .....                       | 3 |
| The eye camp .....                       | 3 |
| Photo Gallery .....                      | 4 |
| Examination of patients .....            | 4 |
| Administration of local anesthesia ..... | 5 |
| Performing the surgeries .....           | 5 |
| Post operation .....                     | 8 |

## Acknowledgement

We are grateful to Beta Charitable Trust and Crescent Pharma Ltd for sponsoring this camp, and special thanks to our hosts; Riyadha Malindi Mosque & Cultural Centre and Malindi Sub-County Hospital. The support went a long way in providing much needed ophthalmic services to the needy people of Kilifi County and Kenya at large, thereby correcting their vision and empowering them. We look forward to more collaboration in future.

## Introduction

It is alarming that 282 million people worldwide have abnormal vision and 14% of them are completely blind. Also of concern is the fact that 90% of visually impaired people live in low-income settings. Vision impairment can create great difficulty among people and limit opportunities in education, employment and social engagement. It contributes greatly to lost productivity and poverty among communities. Many eye health problems can be prevented and treatments are among the most successful and cost-effective of all health interventions provided the intervention is timely. Major causes of visual impairment include: refractive error; age-related macular degeneration; cataract; diabetic retinopathy and glaucoma.

CHEPs is on a mission to improve the eye sight of needy communities and prevent blindness among them. We do so by conducting eye camps, to examine them, conduct tests, and treat their eye diseases thereby preventing progression to blindness as well as provide them with spectacles to improve their vision. We also provide surgeries to restore vision among reversibly blind people such as cataract patients, as well as surgeries aimed at preventing blindness such as patients suffering glaucoma, which leads to irreversible blindness.

We have so far conducted 79 eye camps in low-income setups across Kenya providing services to more than 23,237 needy people. We have treated over 16,794 of them with various eye medications, and providing over 8,818 of them with spectacles. We have also operated over 2,759 cataract blind people to restore vision.

Our 79<sup>th</sup> eye camp was held in Kilifi County. It is one of the 47 counties in Kenya, located 562km South East of Nairobi, Malindi being its largest town. The county's total population is over 1,100,000. The inter-census population growth rate for the county is 2.9 percent per annum. On poverty levels, human development indicators show that the county has 70.8 percent of residents live below the poverty line compared to the national poverty level of 46 percent.

## The eye camp

The team held the camp at the Malindi Sub-County Hospital to provide the much needed ophthalmic services. The turnout of patients was 821. All patients were attended to with some 562 received spectacles and other 656 received eye drops to treat different conditions. The team also conducted **67 surgeries** to correct and restore vision

On follow up, all cataract surgeries were successful with vision restored in the patients. No complications have been reported, and all the beneficiaries have expressed heartfelt gratitude. Most of them were elderly, who had lived in a state of blindness for many years, but could not access treatment due to financial constraints.





**Map of Kenya showing the location of Kilifi County**

### Photo Gallery

#### Examination of patients

Patients are examined for blood pressure, blood sugar, HIV and ophthalmic examination and biometry. Those who qualified for surgery were registered and their consent taken.



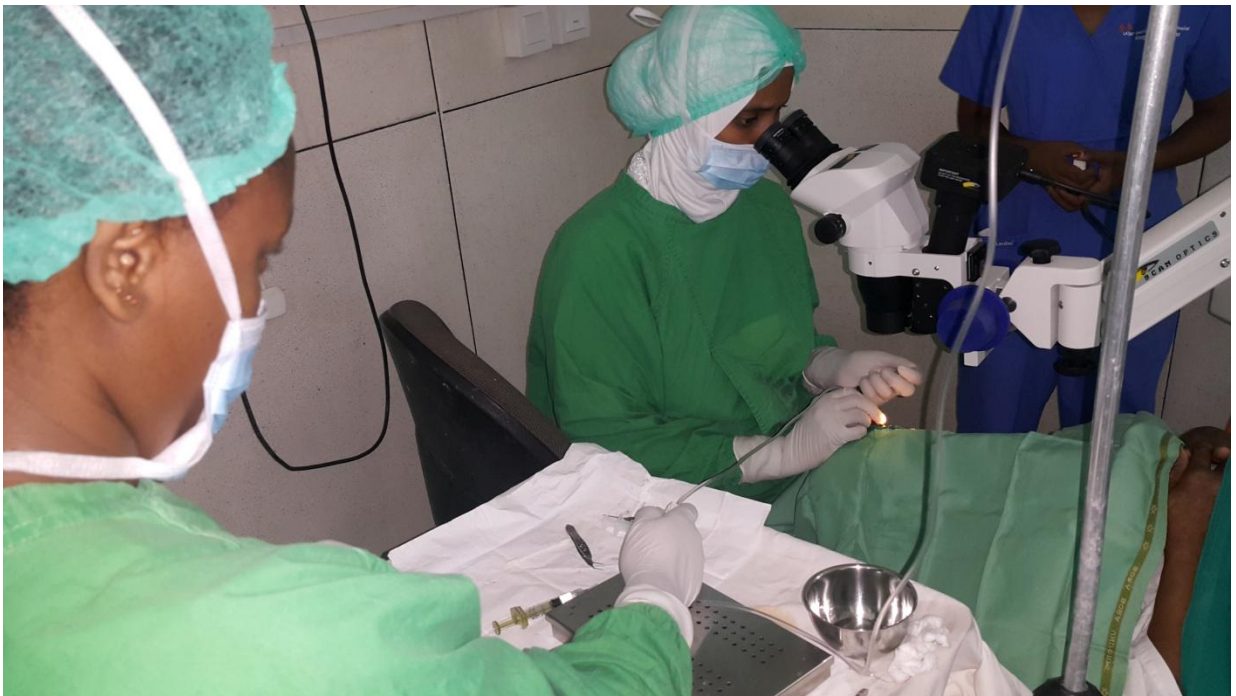
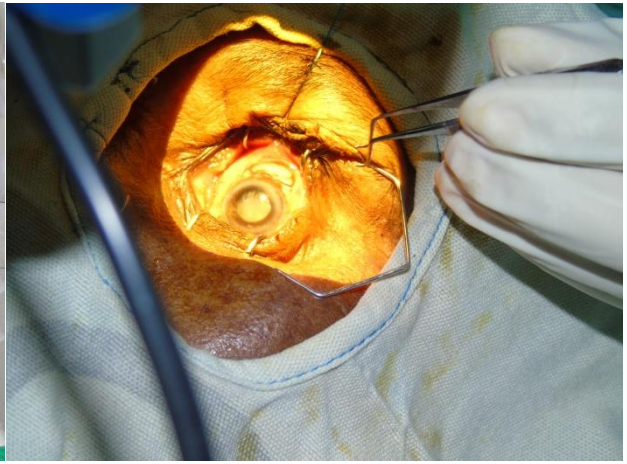
## Administration of local anesthesia



## Performing the surgeries











Post operation































